

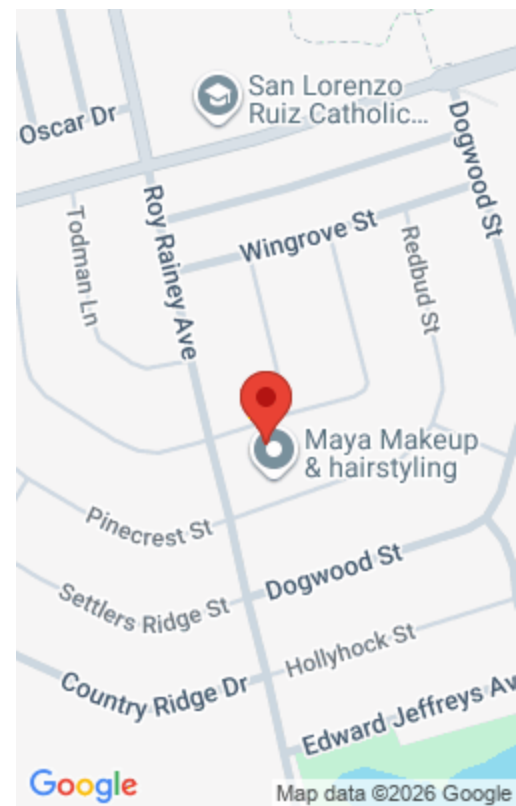
5 BAINTREE ST, MARKHAM, ON L6E 1G7, CANADA

<https://www.gtarealestates.com>

A Rare opportunity to become the next proud owner of this Immaculate Mattamy's Meadowlark Home on a Premium 45' lot with no side-walk. This 4+1 bedrooms with 5 Bathrooms home nestles in highly sought after Wismer Community. The Main Floor features 9' ceiling & upgraded round corners throughout, 18' front entrance foyer to welcome your...

\$1,879,000

- 5 beds
- 5 baths
- Single Family
- Single Family
- 2500 - 3000 sq ft



Rooms & Units Descr



RoomType1: Bedroom 4
RoomLength1: 12.1
RoomDimensions1: 12.1 m X 11 m
RoomLevel2: Second level
RoomWidth2: 14
RoomType3: Bedroom 2
RoomLength3: 11
RoomDimensions3: 11 m X 18.6 m
RoomLevel4: Second level
RoomWidth4: 11.6
RoomType5: Office
RoomLength5: 13
RoomDimensions5: 13 m X 10 m
RoomLevel6: Basement
RoomWidth6: 21
RoomType7: Bedroom 5
RoomLength7: 12
RoomDimensions7: 12 m X 14 m
RoomLevel8: Basement
RoomWidth8: 8
RoomType9: Living room
RoomLength9: 11.8
RoomDimensions9: 11.8 m X 11.6 m
RoomLevel10: Main level
RoomWidth10: 11.6
RoomType11: Family room
RoomLength11: 16
RoomDimensions11: 16 m X 13 m
RoomLevel12: Main level
RoomWidth12: 11
RoomType13: Kitchen
RoomLength13: 12.8
RoomDimensions13: 12.8 m X 11.2 m
RoomLevel14: Main level
RoomWidth14: 5.3
RoomType15: Mud room
RoomLength15: 8.25
RoomDimensions15: 8.25 m X 4.3 m

RoomLevel1: Second level
RoomWidth1: 11
RoomType2: Primary Bedroom
RoomLength2: 15
RoomDimensions2: 15 m X 14 m
RoomLevel3: Second level
RoomWidth3: 18.6
RoomType4: Bedroom 3
RoomLength4: 18.8
RoomDimensions4: 18.8 m X 11.6 m
RoomLevel5: Basement
RoomWidth5: 10
RoomType6: Media
RoomLength6: 12
RoomDimensions6: 12 m X 21 m
RoomLevel7: Basement
RoomWidth7: 14
RoomType8: Laundry room
RoomLength8: 5
RoomDimensions8: 5 m X 8 m
RoomLevel9: Main level
RoomWidth9: 11.6
RoomType10: Dining room
RoomLength10: 11.8
RoomDimensions10: 11.8 m X 11.6 m
RoomLevel11: Main level
RoomWidth11: 13
RoomType12: Eating area
RoomLength12: 14.2
RoomDimensions12: 14.2 m X 11 m
RoomLevel13: Main level
RoomWidth13: 11.2
RoomType14: Pantry
RoomLength14: 9.3
RoomDimensions14: 9.3 m X 5.3 m
RoomLevel15: Main level
RoomWidth15: 4.3



Location Details

City: Markham (Wismer)

Province: Ontario

Property Details

SubdivisionName: Wismer

Levels: 2

Stories: 2

FrontageLength: 45 ft

Property Features

CommunityFeatures: School Bus

Fencing: Fenced yard

Flooring: Laminate,Tile

Heating: Forced air

HeatingFuel: Natural gas

CoolingYN: True

Cooling: Central air conditioning

ParkingTotal: 6

OpenParkingYN: False

GarageYN: True

AttachedGarageYN: True

CarportYN: False

FireplacesTotal: 1

PoolYN: False

ViewYN: False

WaterfrontYN: False

Courtesy of

OfficeName: SUTTON GROUP-HERITAGE REALTY INC.

Office ID: 279542

ListAOR: Toronto Regional Real Estate Board

Building Details

ParkingTotal: 6

Heating: Forced air



Amenities & Features

Waterfront available: No

AttachedGarageYN: Yes

CarportYN: No

CoolingYN: Yes

Cooling: Central air conditioning

OpenParkingYN: No

GarageYN: Yes

PoolYN: No

CommunityFeatures: School Bus

Total Fireplaces: 1

